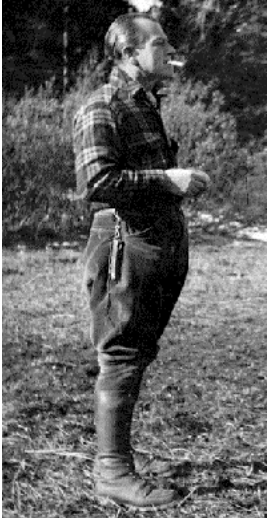


BEDAUX EXPEDITION RESEARCH SOURCES AT THE BC ARCHIVES, ROYAL BC MUSEUM

Who Was Charles Eugène Bedaux?



Born in France in 1886, Charles Bedaux moved to the United States and became a naturalized American citizen. He was a highly successful businessman in the field of management consulting. According to Jim Christy's 1984 biography, prior to his most famous expedition in 1934 across northeastern British Columbia, he had made hunting and exploratory trips to northwestern BC in 1926 and 1929, the central interior in 1931 and to northeastern BC in 1932 and 1933.

Bedaux announced his intention to cross northeastern BC with Citroën half-track trucks on May 25, 1934 in New York City. The Canadian Sub-Arctic Expedition launched from Edmonton, Alberta on July 6, 1934 and contained a formidable array of talent and beauty, including Floyd Crosby, a Hollywood cinematographer, two land surveyors, Frank Swannell and Ernest Lamarque, mining engineer Jack Bocock, a Citroën mechanic, many cowboys, as well as Bedaux's mistress, his wife and her maid.

BC Archives Visual Records call no. E-03667 (cropped)



BC Archives Visual Records call no. B-07387 (cropped)

Due to a combination of weather, terrain and poor planning, the expedition failed and the Citroën vehicles were abandoned. Although Bedaux returned to northern BC in 1936 with plans to build a road, he did not follow through. In 1937 he hosted the marriage of the Duke and Duchess of Windsor at his French chateau. Collaborationist activities with Nazi-occupied France led to his 1942 arrest in North Africa. Returned to the U.S., he committed suicide in a Florida prison in 1944.

RECORDS OF BEDAUX AT THE BC ARCHIVES AND OTHER ARCHIVES

Textual Records

British Columbia, Provincial Secretary, Bedaux Sub-Arctic [Cassiar] Expedition, 1934. Call number: GR-1668, box 2, folder 14.

Freer, Willard M., Bedaux Sub-Arctic Expedition, 1934 [diary]. Call number: E/D/F87.1.

Lamarque, E.C.W., Travels and explorations in northern British Columbia, 1934. Includes copies of a 1935 newspaper clipping, a map, 1937 correspondence and a BC government reconnaissance report. Call number: G/B/L16.

Lebourdais, Louis, Bedaux Expedition; file includes newspaper clippings. Call number: MS-0676, box 3, folder 15

Swannell, Frank Cyril. Call number: MS-0392, see online finding aid for details.

Visual Records

Use the search term `bedaux` to find all catalogued photographs.

Cartographic Records

Lamarque, E.C.W., Plan of the Region about the 58th Parallel from Longitude 124° 30' to Longitude 130° West Northern British Columbia, Canada. [1937?]. Scale: 1 inch : 2 miles. Call number: CM/E62.

Swannell, Frank Cyril, Topographical Sketch Map Showing Route Traversed by the Bedaux Sub-Arctic Expedition 1934 Through the Rocky Mountains Cassiar and Peace River Districts British Columbia Canada. 1935. Scale: 1 inch : 4 miles. Call number: CM/D112.

Sound Recordings

Oliver Travers interview by Kreg O. Sky, recorded 1984. Call number: T4105:0026.

Library (Publications About Bedaux)

Bannock and Beans: A Cowboy's Account of the Bedaux Expedition. Bob White. Edited by Jay Sherwood. Victoria: Royal BC Museum, 2009. In process.

"The Great White Cruise, or, How Charles Bedaux Tried to Conquer the Canadian Rockies with a Citroen Half-track and Almost Invented Off-road Racing." Bruce McCall. *Car and Driver*, v.23, no. 8 (Feb. 1978). Call number: NWp 971M B399M.

The Price of Power: A Biography of Charles Eugene Bedaux. Jim Christy. Toronto, Ont.: Doubleday Canada, 1984. Call number: NW 620.8 B399C.

Selected Bedaux Expedition Records in Other Canadian Archives

Glenbow Archives (Glenbow Museum), Bedaux Expedition fonds. Fonds consists of 177 photographs copied in 1964.

Library and Archives Canada, Charles Eugène Bedaux fonds. Fonds consists of 40 cm of textual records and other material, including 29 motion picture film reels.

Library and Archives Canada, Ernest C.W. Lamarque collection. Collection consists of 10.2 cm of textual records; 2 watercolours; 2 prints.

Library and Archives Canada, Frank Cyril Swannell fonds. Fonds contains photographs and maps of the Bedaux expedition.

Whyte Museum of the Canadian Rockies, Ernest C. W. Lamarque fonds. Collection consists of ca. 50 cm of textual records; 11 photograph albums (522 prints); 2 photographs.

COPYING RECORDS

In-person

For photocopies of original records, complete a Photocopy Requisition Form. Copies of microfilmed files can be made on our self-serve reader-printers during full service hours. Records may also be self-copied using your own camera for personal use only during full service hours.

Mailing Address: Access Services, BC Archives, 675 Belleville St., Victoria, BC V8W 9W2

Location: 655 Belleville St., Victoria, BC

Remote inquiries

Write, fax or e-mail your request, with details of what you would like copied. Pre-payment is required for all copy orders. Archives staff will contact you with the cost and prepayment options.

Phone: (250) 387-1952

Fax: (250) 387-2072

E-mail: access@bcarchives.bc.ca

Internet: <http://www.bcarchives.bc.ca>